

Working material:

Ceramic body 254 or 264



or

Ceramic body 371



Working material:

Ceramic body

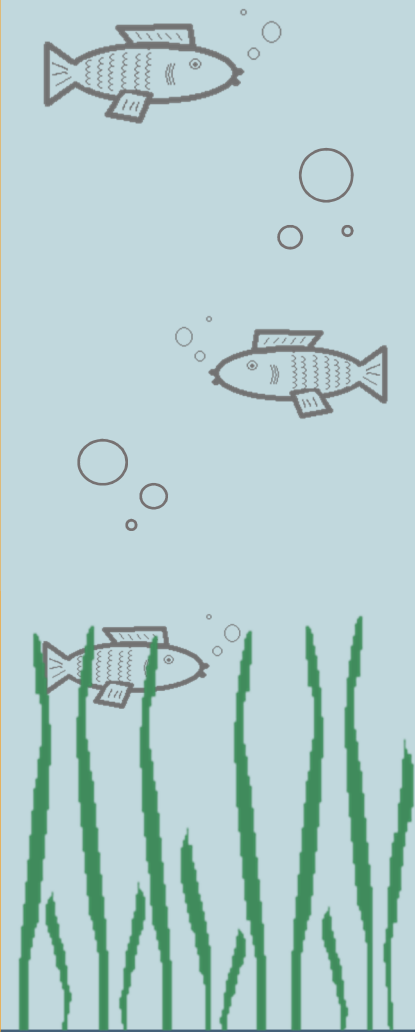
Workboard & arched plaster mould

Sponge & wood spatula

Knife & rolling pin

Clay cutter

Fish platter



Pottery Passion is an initiative of Goerg & Schneider Keramische Massen

Find more inspiration on: www.pottery passion.com

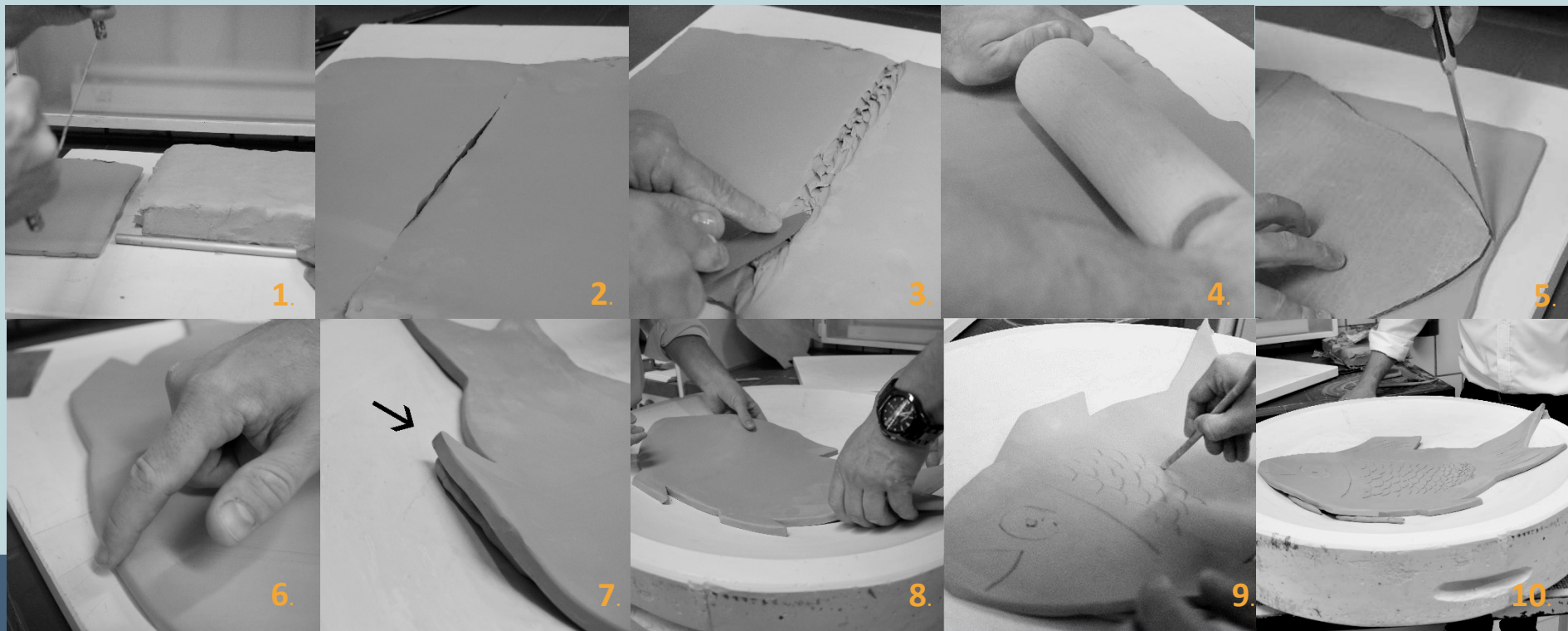
or follow us:



haveagoodclay



GOERG & SCHNEIDER
 keramische Massen



1. Cut approx. 0.5 - 1.0 cm large plates out of the body by using a clay cutter

2. Several plates must be made depending on the desired size.

3. Afterwards the plates must then be connected crosswise on the front and rear side.

4. Roll out the ceramic body to the desired size by means of a rolling pin.

5. Press the template lightly on the body and cut out the outlines.

6. Fettle the edges with a sponge and smooth out any irregularities.

7. Make sure that the fins are not cut too much and round off the interfaces.

8. Place the fish on the arched plaster mould for slow drying. Take care to keep the edges damp. (slow drying, dry the fish slowly).

9. Use the wooden spatula to scratch the desired outlines into the surface in a damp, leather-hard state.

10. The fish can be glazed and created in any form after drying.